

Forest Trees and Plants



Name:

Welcome to the Tillamook Forest Center! Follow the directions below to help you explore the forest and discover its hidden treasures. You will have fun and learn something new!

Plants' colors, shapes, textures and sizes help them survive in habitats with different levels of sunlight, temperature, rainfall and predators.



Go to "Early Coast Range Forest"



Find these leaves in the forest mural and finish their outlines:



Put a star next to the plant that looks like its leaves would be too sharp for an animal to want to eat.



**Go to “Early Life in the Tillamook”
and “Early Coast Range Forest”**



Find two different trees in these two areas and feel their bark. *Bark protects trees from fire, injury, disease and insects.*

Touch the bark of the first tree. It feels:



Bumpy

Spiky

Smooth

Rough

What color is the bark?

Touch the bark of the second tree. It feels:



Bumpy

Spiky

Smooth

Rough

What color is the bark?



Open the burned tree and look inside.



What do you see?

What is happening to this tree?

Forest Trees and Plants

Name: _____



Look through the exhibit hall's windows to the trees in the forest outside.

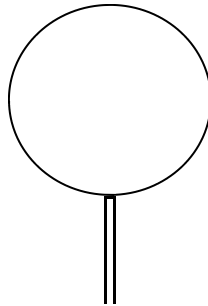
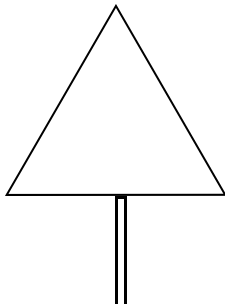


Choose a tree. What does it look like?
Circle words that describes it:

- Fluffy Spiky Orange Yellow Red
Brown Grey Green Round Pointed



Circle the shape of a tree outside:



Write some of your own words about the trees you see:



Go to "Forest of Today and Tomorrow"

Trees and plants have strong scents to either attract or repel insects.

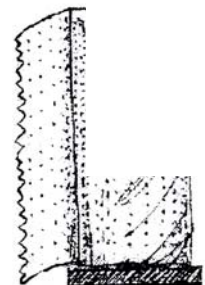
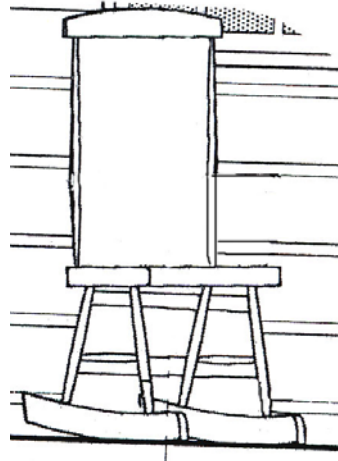
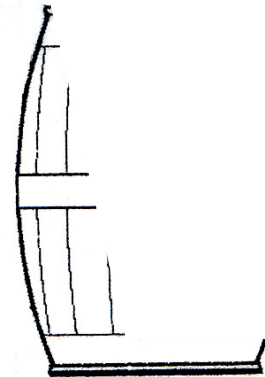
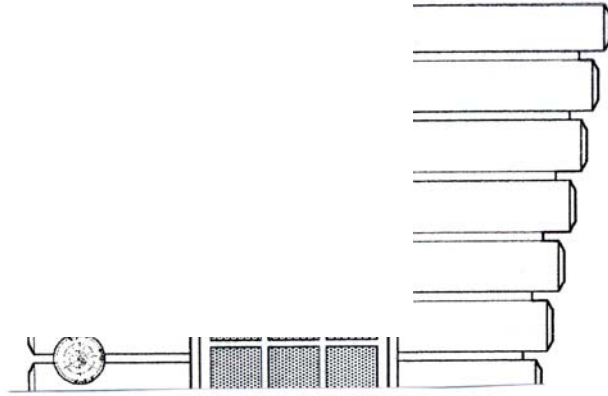


Find two plants in the drawers under the forest models that smell good.
What are they? _____ and _____

Trees are used to make many things that people use everyday.



Find these things made of wood in the gallery and finish their drawings.
What are they?



What do you use at home or at school that comes from a forest?